



# MONTHLY MEMBERSHIP PROGRESS REPORT

District 120

Results as of: 02/28/2018

GMT: ANTTI FORSELL

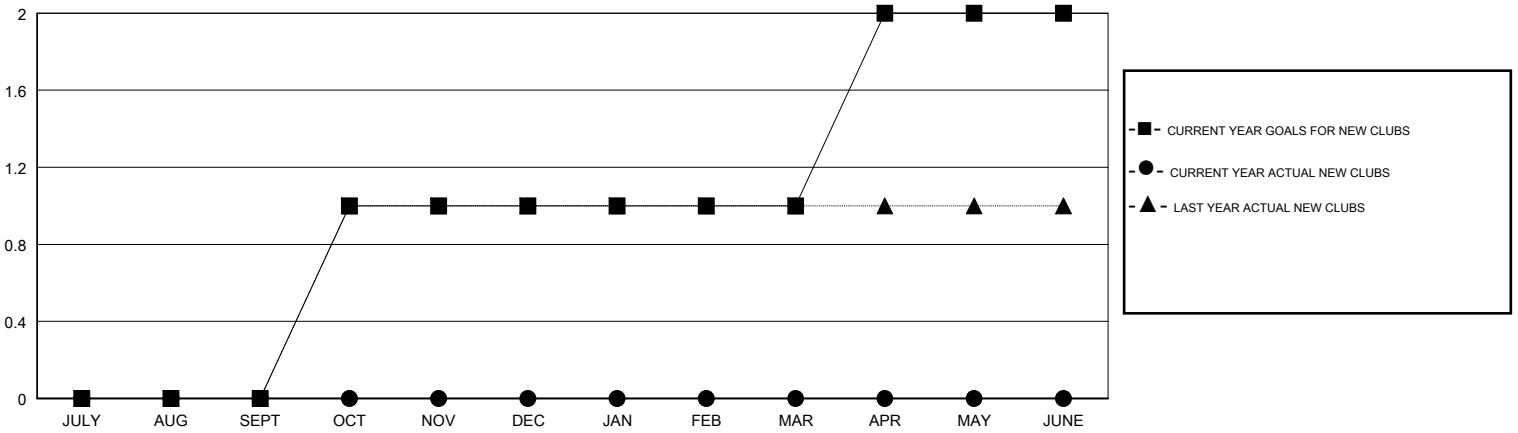
LOCATION ESTONIA

GMT CA

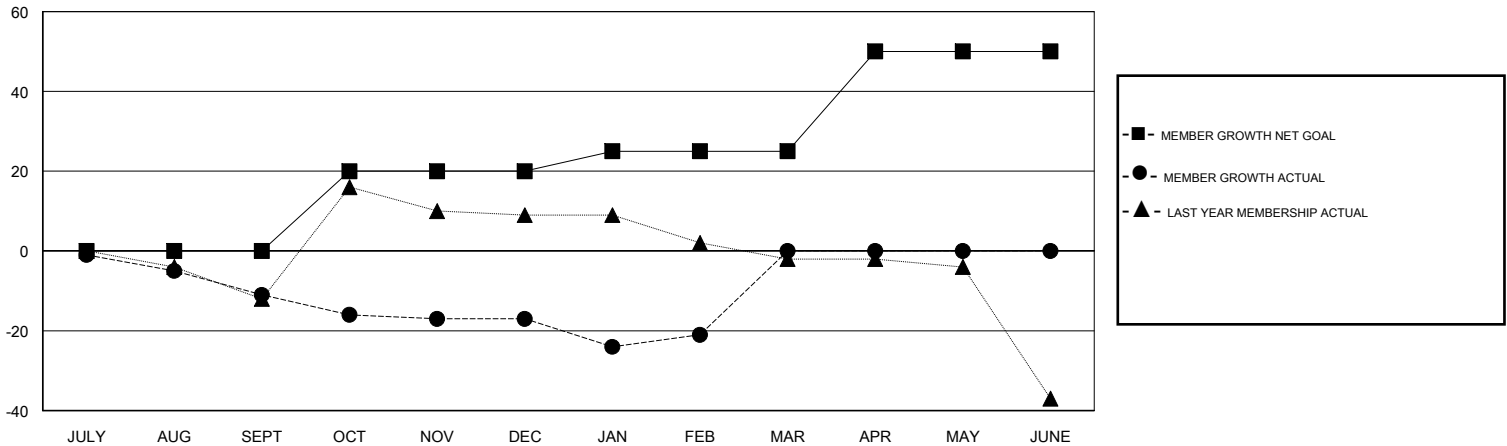
Clubs			
RESULTS FOR 2017-2018			
QUARTER	NEW CLUB GOAL	NEW CLUBS	DROPPED CLUBS
JULY/AUG/SEPT	0	0	2
OCT/NOV/DEC	1	0	0
JAN/FEB/MAR	0	0	0
APR/MAY/JUNE	1	0	0

Members			
RESULTS FOR 2017-2018			
QUARTER	MEMBER GROWTH NET GOAL	MEMBER GROWTH ACTUAL	DROPPED MEMBERS ACTUAL (including transfers)
JULY/AUG/SEPT	0	5	16
OCT/NOV/DEC	20	10	16
JAN/FEB/MAR	5	9	13
APR/MAY/JUNE	25	0	0

GOALS AND ACTUAL NEW CLUBS CUMULATIVE



GOALS AND ACTUAL MEMBERS CUMULATIVE



DROPPED CLUBS: 2	19 CLUBS OF 61 ADDED 1 OR MORE NEW MEMBERS	<u>GENDER DISTRIBUTION</u>	
DROPPED MEMBERS		MALE	863 (71.50%)
DECEASED	2	FEMALE	344 (28.50%)
CLUB CANCELLED	0	Women Percentage Fiscal Year Goal: 31%	
OTHER	43	TOTAL FAMILY UNIT MEMBERS 81	
TOTAL	45		
<a href="#">CLICK HERE FOR CUMULATIVE MEMBERSHIP DATA</a>		FAMILY MEMBERS PAYING HALF DUES 42	